

# **[SmartPrinter]manual**

Ver1.03

Date:January 13, 2023

## 1. Features of SmartPrinter

- a. It can search identifiable network printer that is in the local area network.
- b. It can check whether the specified network printer driver is already installed or not and whether the IP address of the network printer is changed or not.
- c. Network print drivers can be automatically installed for specified and identifiable network printers.

## 2. Remarks:

- a. Please make sure your model is supported by SmartPrinter (Hereinafter refers to as "tool" ).
- b. Make sure your printer is configured on the same LAN as your computer (For specific network configuration methods, please refer to the Operation Instructions). (Generally speaking, the first three segments of an IP address on the same router should be the same.)
- c. Operating system supported:
  - Win7 SP1 ( 32-bit and 64-bit )
  - Win10 64-bit
  - Win11 64-bit

### 3. Operating instructions

#### a. About the tool

You can obtain the tool in the following ways:

From the CD

From the official website

From the customer service staff

#### b. Unzip the tool to an appropriate directory on your computer.

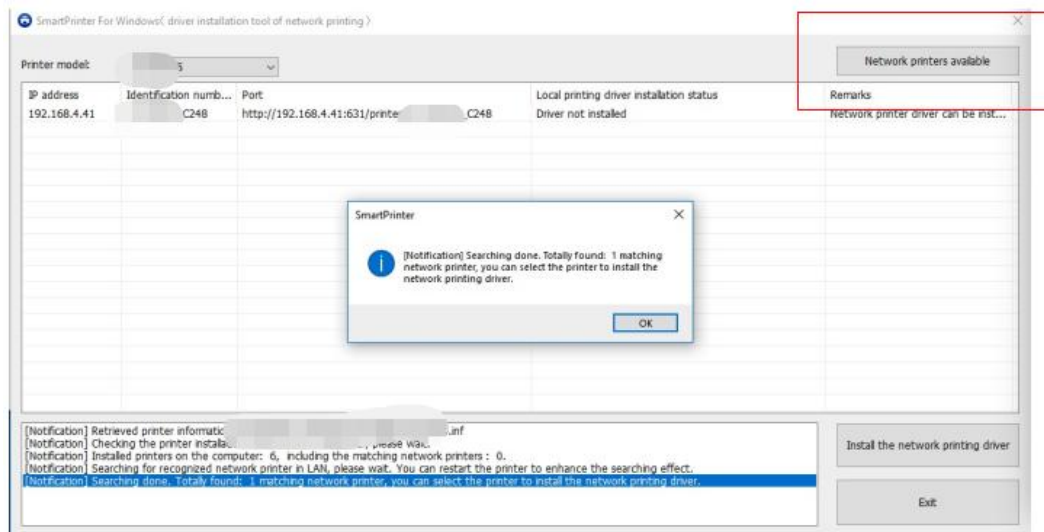
Unzip the tool into D:\ or E: \. It is not advised to put in a directory with Chinese nor to the desktop.

\*This tool is in unattended setup mode. You can use it directly after unzip.

#### c. Click "**SmartPrinter.exe**" in the decompression directory.



d. After selecting the printer model, click **"Network printers available"** .



It may take about 3-5 seconds for one searching.

If the printer is not found, please try again. As long as the network is not too bad, it can be found.

If the printer still cannot be found, please check whether the computer and printer are on the same LAN.

You can check whether the IP address of the computer and the IP address of the printer are in the same network segment (the first three IP addresses should be the same).

To increase the efficiency , you can also restart the printer during the searching.

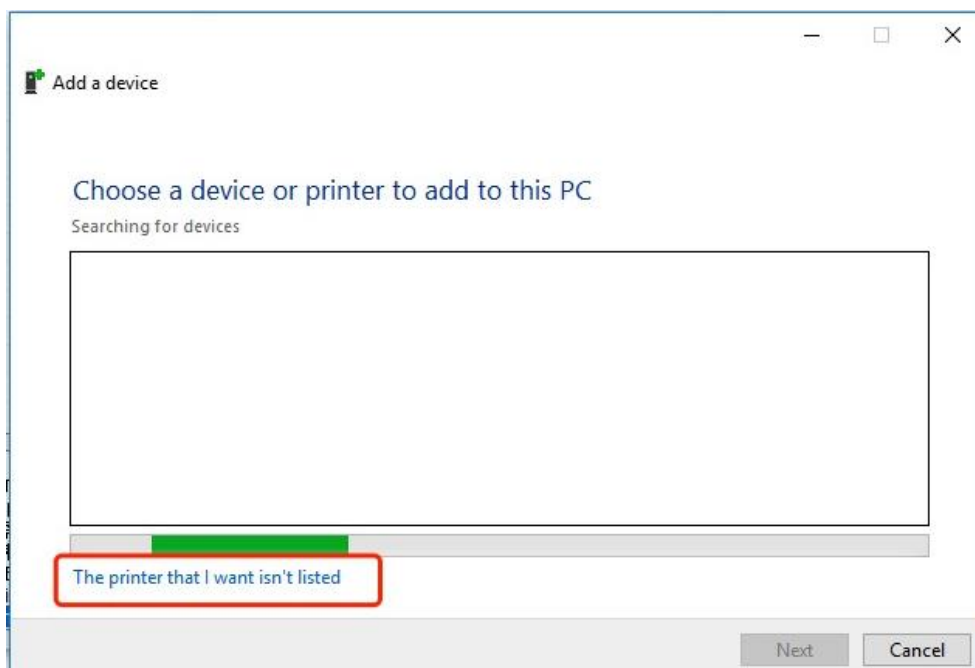
e. Select the printer in the list, and click **"Install the network printing driver"**

a) The following operation prompt interface will show. Please read it carefully and follow the operation steps.

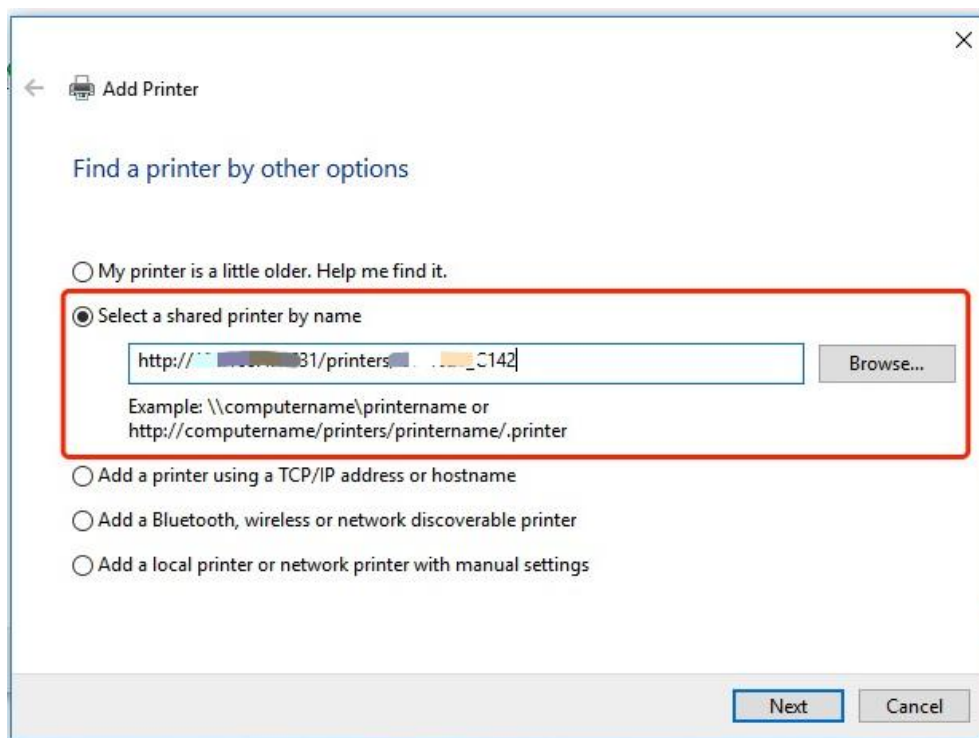


b) Wait for a while after clicking "OK". The [Add a printer] interface will show and then select "add a network, wireless or bluetooth printer".

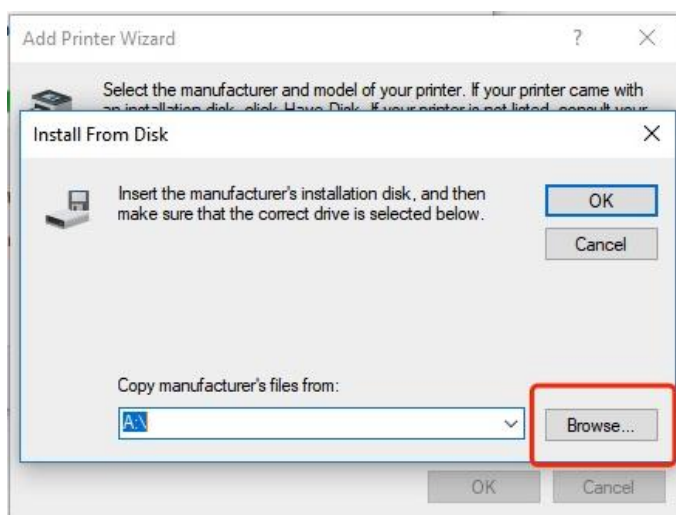
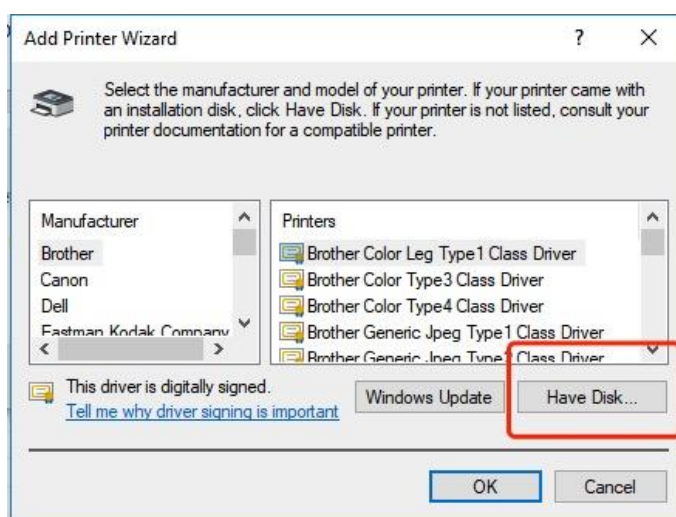
c) Select "The printer that I want isn't listed".



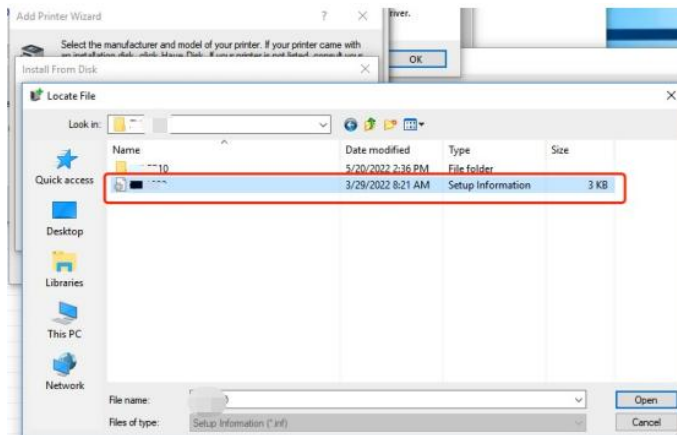
d) Select "Select a shared printer by name". Paste the shared printer information (Ctrl + V) into the input field and click "Next".



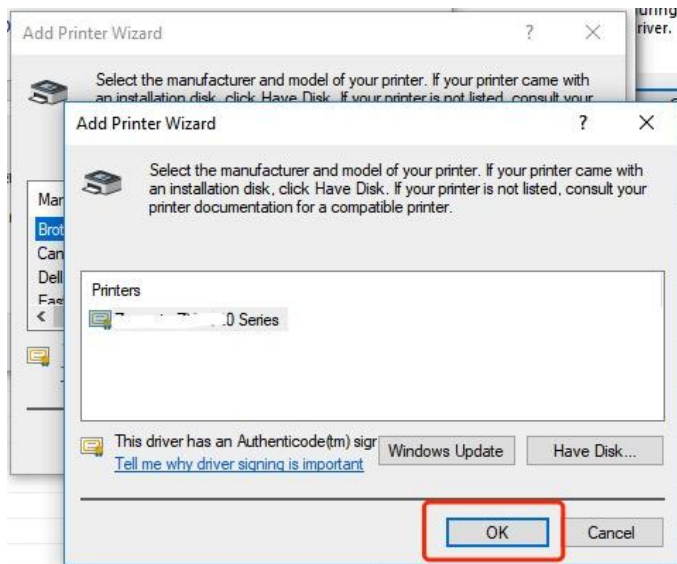
e) Select "Have Disk".



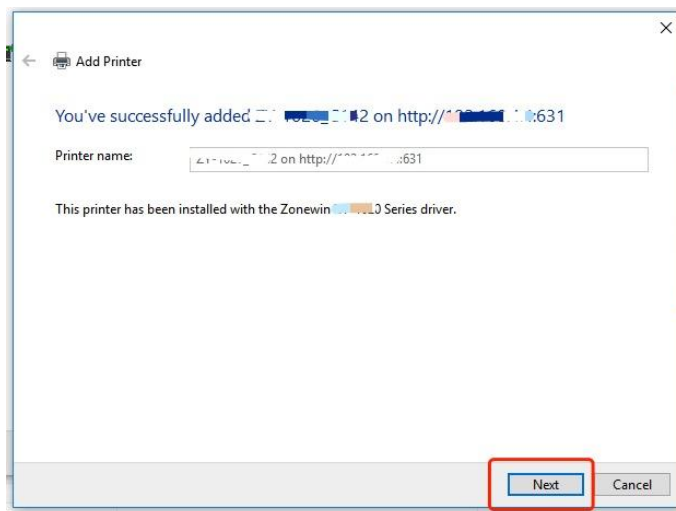
f) Find the INF file of the corresponding printer driver from the smartprinter working directory and click "Open".



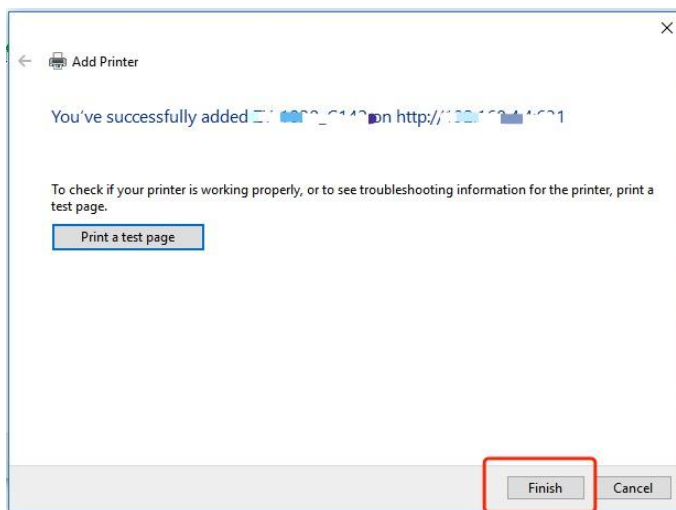
g) Click "OK".



h) Follow the instruction to set printer name.



i) Follow the instruction to install. And click "Finish".



f. [Remarks] **If the IP address changes, please reinstalled the network print driver quickly .**

a) Open the tool and search for available network printers to see if the IP address of the printer has been changed or not.



b) At this time, select the printer and click "Install networks printing" and you can

re-install the network printing driver.

\*This installing mode runs quick. It usually takes around ten seconds.